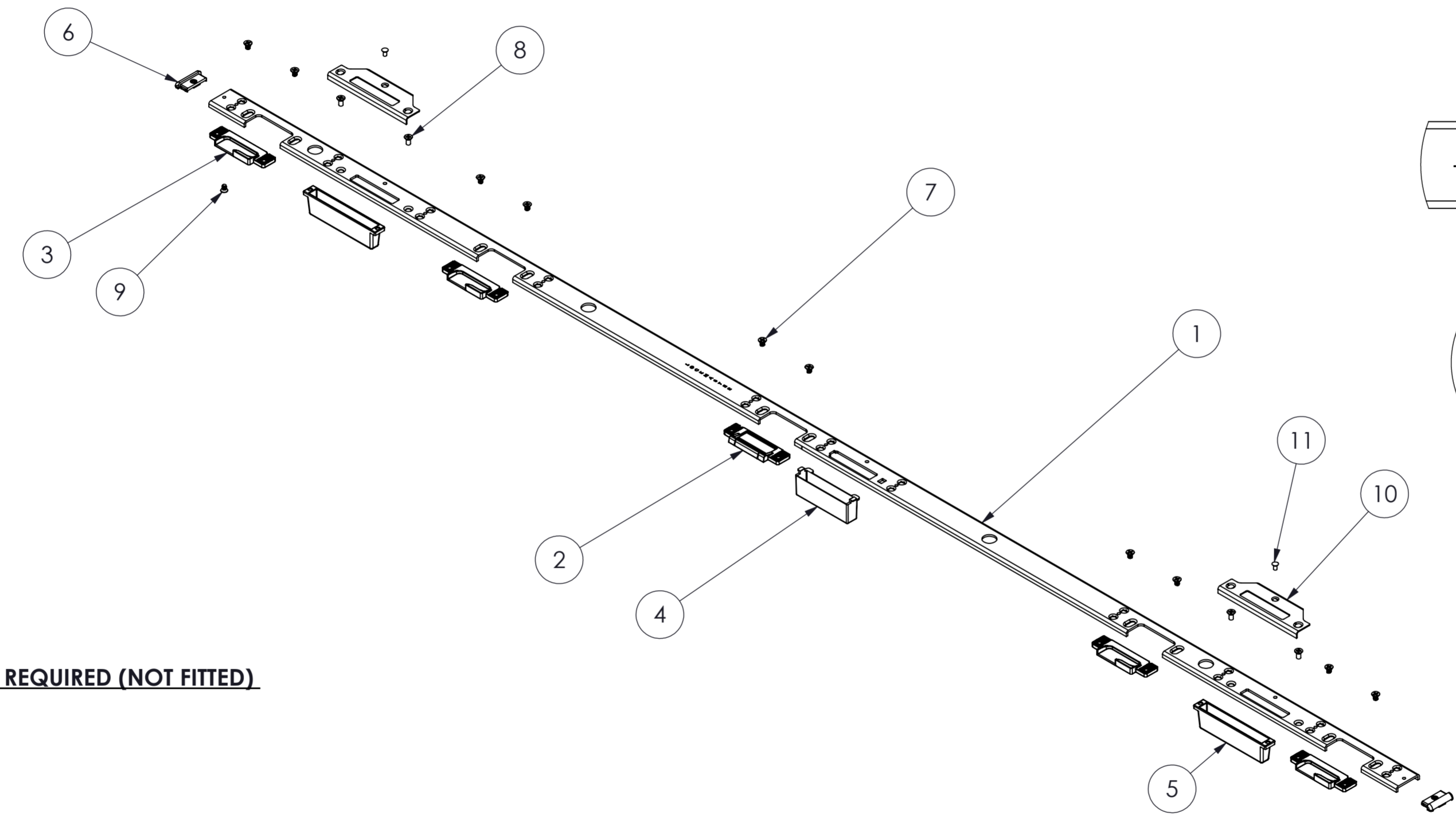
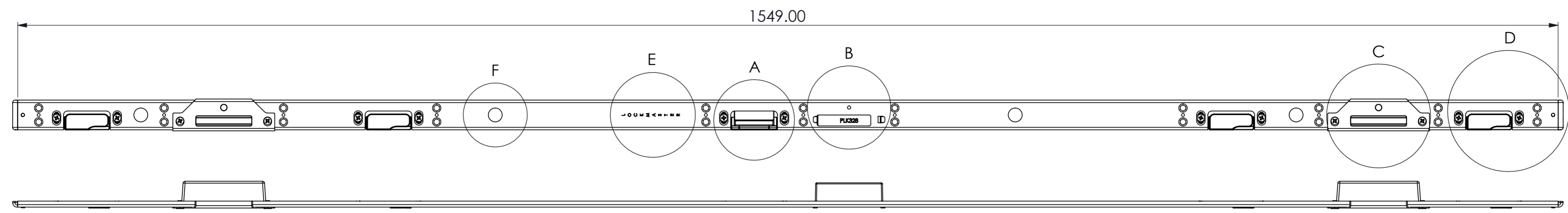
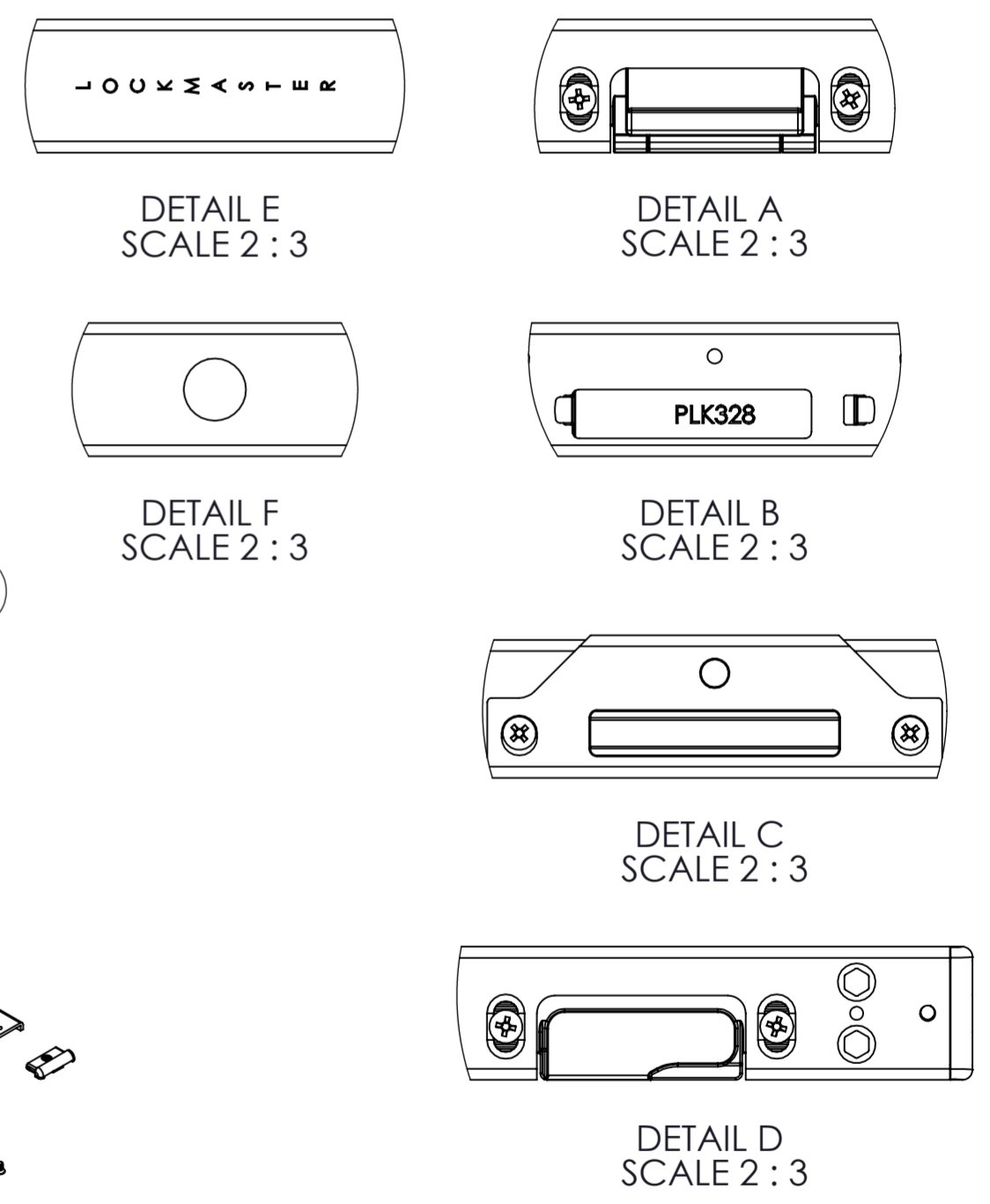


This work is copyright and no part may be reproduced, by any process, nor may any other exclusive right be exercised without the permission of ASSA ABLOY.

Revision	Description	Date
4	NO DESIGN CHANGES- UPDATED SHEET FORMAT	2019-01-30



PACKERS - AS REQUIRED (NOT FITTED)



ITEM NO.	PART NUMBER	DESCRIPTION	qty
1	LK006-C02-19	BASE PLATE RH FOR PL172HK	1
2	PLK99-C134	LATCH PLATE	1
3	PLK99-C136	ROLLER BOX RH	4
4	PLK328	HOOK & DEAD BOLT TIDY BOX	1
5	PLK99-C004	HOOK TIDY BOX (SCREW TYPE)	2
6	PLK99-C155	END CAP (SCREW-ON)	2
7	OF6607SC	M4 x 6MM LONG COUNTERSUNK HEAD TAPTITE SCREW POZIDRIV	10
8	PL10-C071-19	M4 x 8 (THREAD ROLLING SCREW)	4
9	OF83585SC	M3.5 x 6MM LONG COUNTERSUNK HEAD TAPTITE SCREW POZIDRIV	2
10	PLK-C784	HIGH SECURITY KEEP PLATE	2
11	PLK-C077	RIVET FOR SECURITY KEEP PLATE	2

Surface treatment: SEE INDIVIDUAL COMPONENTS			Material: SEE INDIVIDUAL COMPONENTS			General tolerance: N/A		
Volume: 144134.12 mm³	Mass: 360.25 gram	Surface area: 175587.52 mm²	Created (YYYY-MM-DD): 2013-05-16	Designed by: PS	Drawn by: RC	Scale: 1:4 (A2)	Projection: 	
ASSA ABLOY ASSA ABLOY UK						Industrial Lock RH (PL172HK) ASSEMBLY P729		Alternate ID: LK006-597HS Document ID: D000481000-001 Rev.: 4